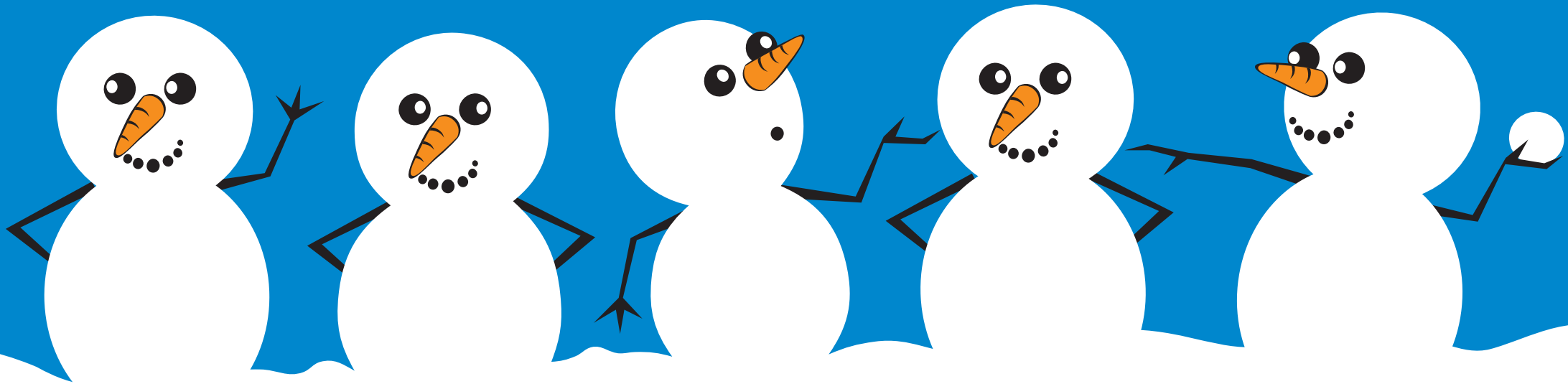


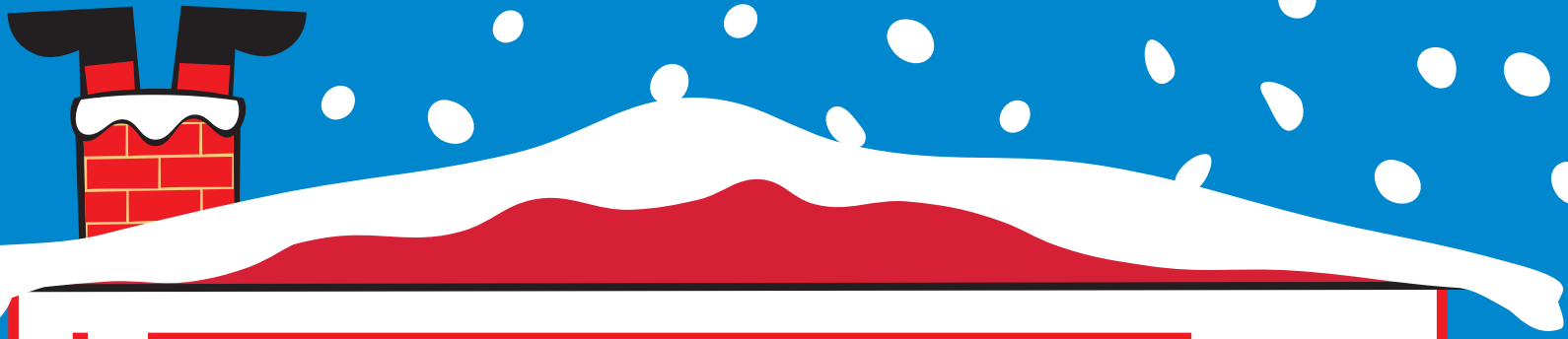
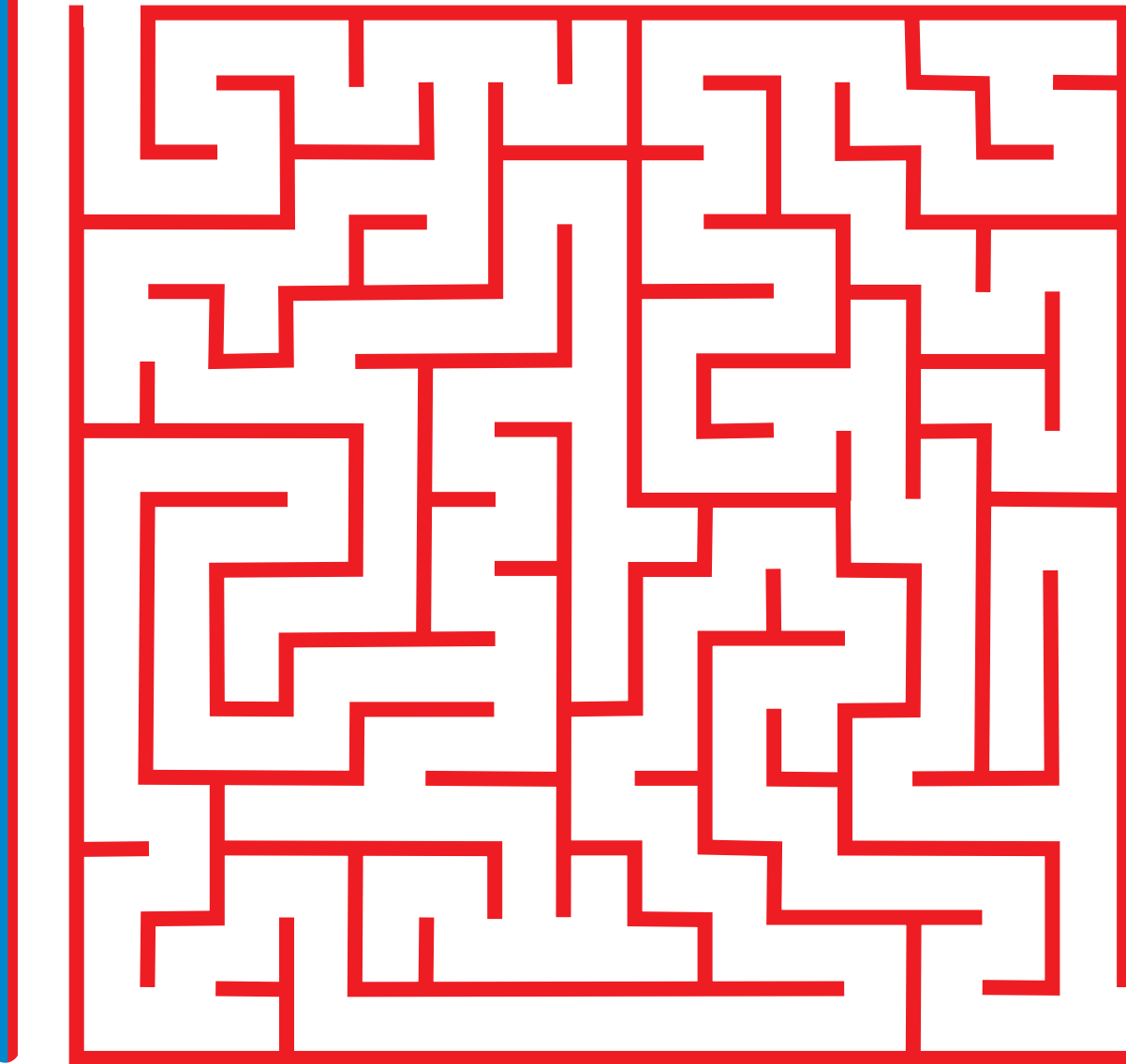
**CAN YOU FIND THE IDENTICAL SNOWMEN?**



CAN YOU FIND THE SEVEN DIFFERENCES?



**CAN YOU  
HELP SANTA  
GET TO THE  
CHRISTMAS  
TREE**

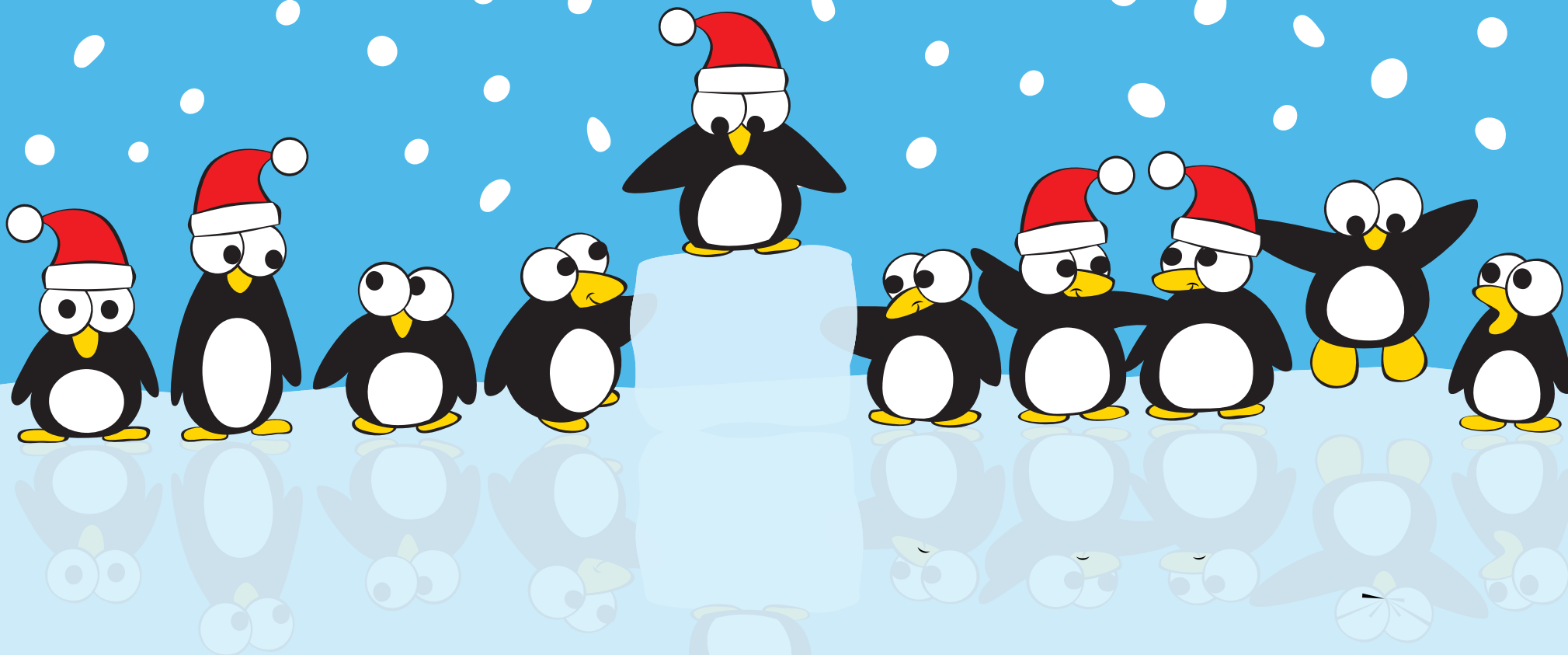


# JIGSAW WORD PUZZLES

CUT OUT AND RE-ARRANGE TO SOLVE THE PUZZLE



HOW MANY PENGUINS ARE WEARING SANTA HATS?



# HOW MANY MINCE PIES HAS SANTA TAKEN A BITE FROM?



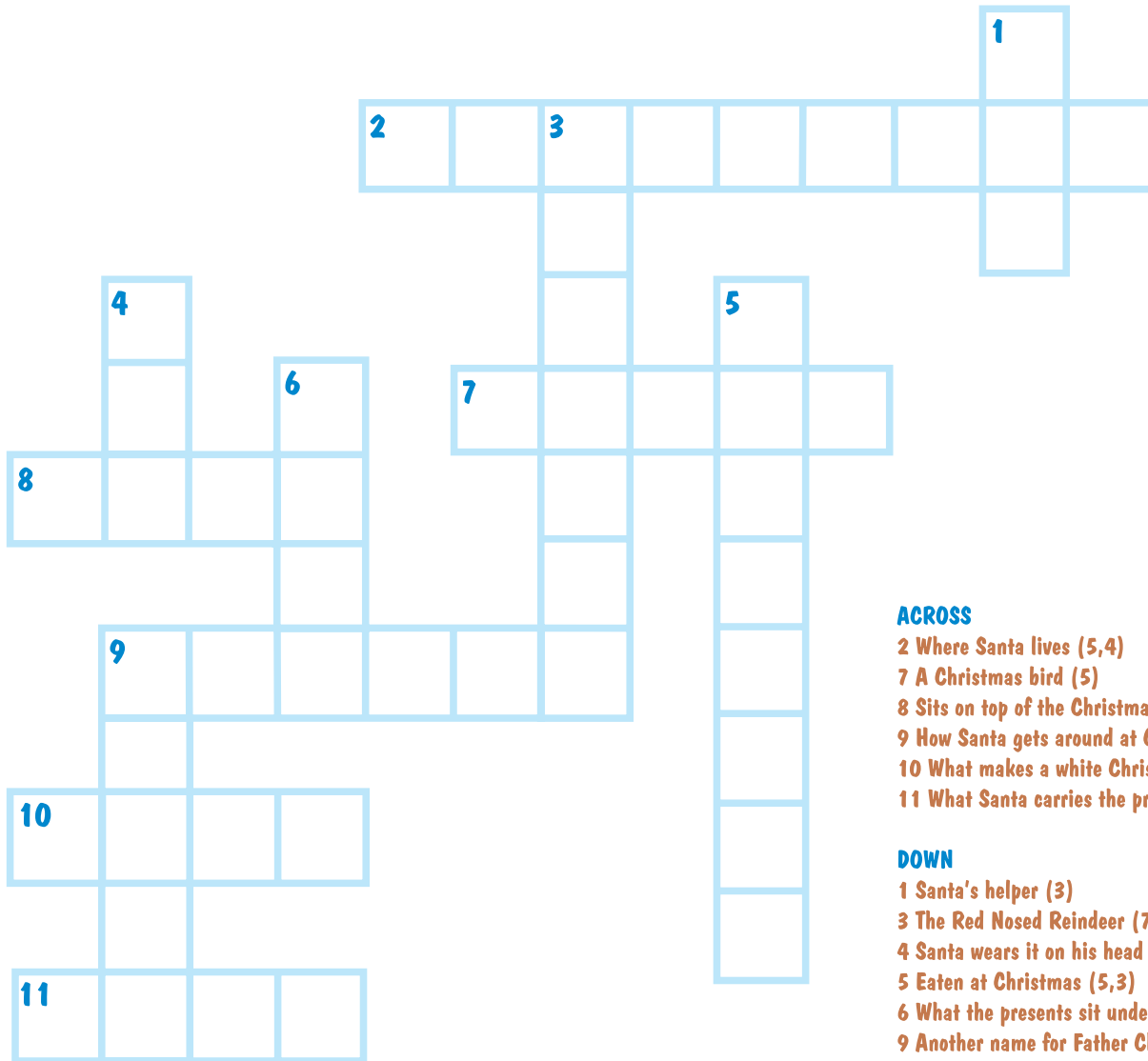
# CHRISTMAS WORD SEARCH



SNOWMAN  
CARROT  
FROSTY  
SNOW



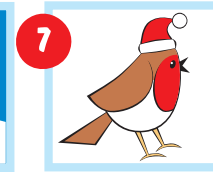
# CHRISTMAS CROSSWORD



## ACROSS



(5 & 4 letters)



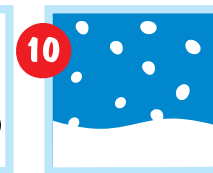
(5 letters)



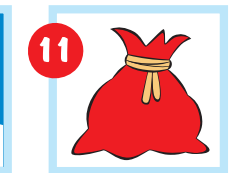
(4 letters)



(6 letters)



(4 letters)



(4 letters)

## DOWN



(3 letters)



(7 letters)



(3 letters)



(5 & 3 letters)



(4 letters)



(5 letters)

## ACROSS

- 2 Where Santa lives (5,4)
- 7 A Christmas bird (5)
- 8 Sits on top of the Christmas tree (4)
- 9 How Santa gets around at Christmas (6)
- 10 What makes a white Christmas (4)
- 11 What Santa carries the presents in (4)

## DOWN

- 1 Santa's helper (3)
- 3 The Red Nosed Reindeer (7)
- 4 Santa wears it on his head (3)
- 5 Eaten at Christmas (5,3)
- 6 What the presents sit under (4)
- 9 Another name for Father Christmas (5)



# CHRISTMAS CROSSWORD

CHRISTMAS

PUDDING